

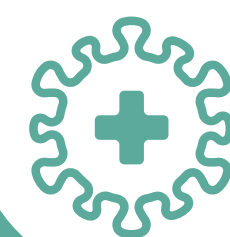


# Keeping you **safe** at **Aultman.**



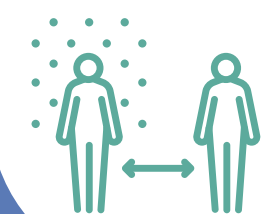
## MASKS & SCREENING

Any person who enters an Aultman facility will be required to wear a cloth face covering or face mask that covers the nose and mouth. If you do not have your own mask, our screening teams, located at each entrance, will provide you with a mask and education on proper use. If you are unable to wear a mask for medical reasons, please notify a staff member. In addition, every patient and visitor will be screened for fever, symptoms and exposure.



## SAFETY & CLEANING

Aultman continues to perform high level disinfecting and sanitizing procedures in all of our facilities to provide protection for everyone.



## VISITOR RESTRICTIONS & SOCIAL DISTANCING

Visitation is restricted at this time. Updated details on our visitation restrictions can be found on our website.

Aultman is asking for your cooperation in following proper cough etiquette, hand-washing and social distancing practices. Please ensure at least 6 feet of distance from others in all common areas throughout our facilities.



## TEAM MEMBER PROTECTION

In order to protect YOU, all Aultman team members are required to wear a face mask. In addition, all Aultman employees are screened for fever and symptoms prior to the start of each shift. If Aultman staff is providing direct patient care, they will follow current guidelines on appropriate personal protective equipment.

As with any other location within the community, there is a risk of exposure to COVID-19 while you are a patient. Aultman is taking serious precautions to minimize patient, visitor and staff exposure. If you are having a procedure or surgery, please discuss the implications of COVID-19 with your doctor.

